

**TOP  
TIPS**

**FOR  
CONTRACTORS**

# BOOK EARLY

Book your accommodation early. There are 13 hotels on the Excel campus all in walking distance of the venue.



**FIND THE MOST COMPETITIVE RATES**





Use one of the many retail outlets on the boulevard for your lunch or you can pop to Tesco Express or the local café.



Use the free water refill stations on the boulevard to keep hydrated. They are located at East and West entrances and by Hall entrances S4 and S7.

# EXCEL'S BOULEVARD

# LAST MINUTE ESSENTIALS

Go to the Business Services shop inside Excel, located on level 0 between Hall entrances N4/S4 (by the car park entrance). It stocks everything exhibitors and contractors need during build and breakdown from safety equipment to those important but smaller items like chalk and duct tape. The team can also help with your last-minute photocopying and printing requirements.



**FIND OUT MORE**

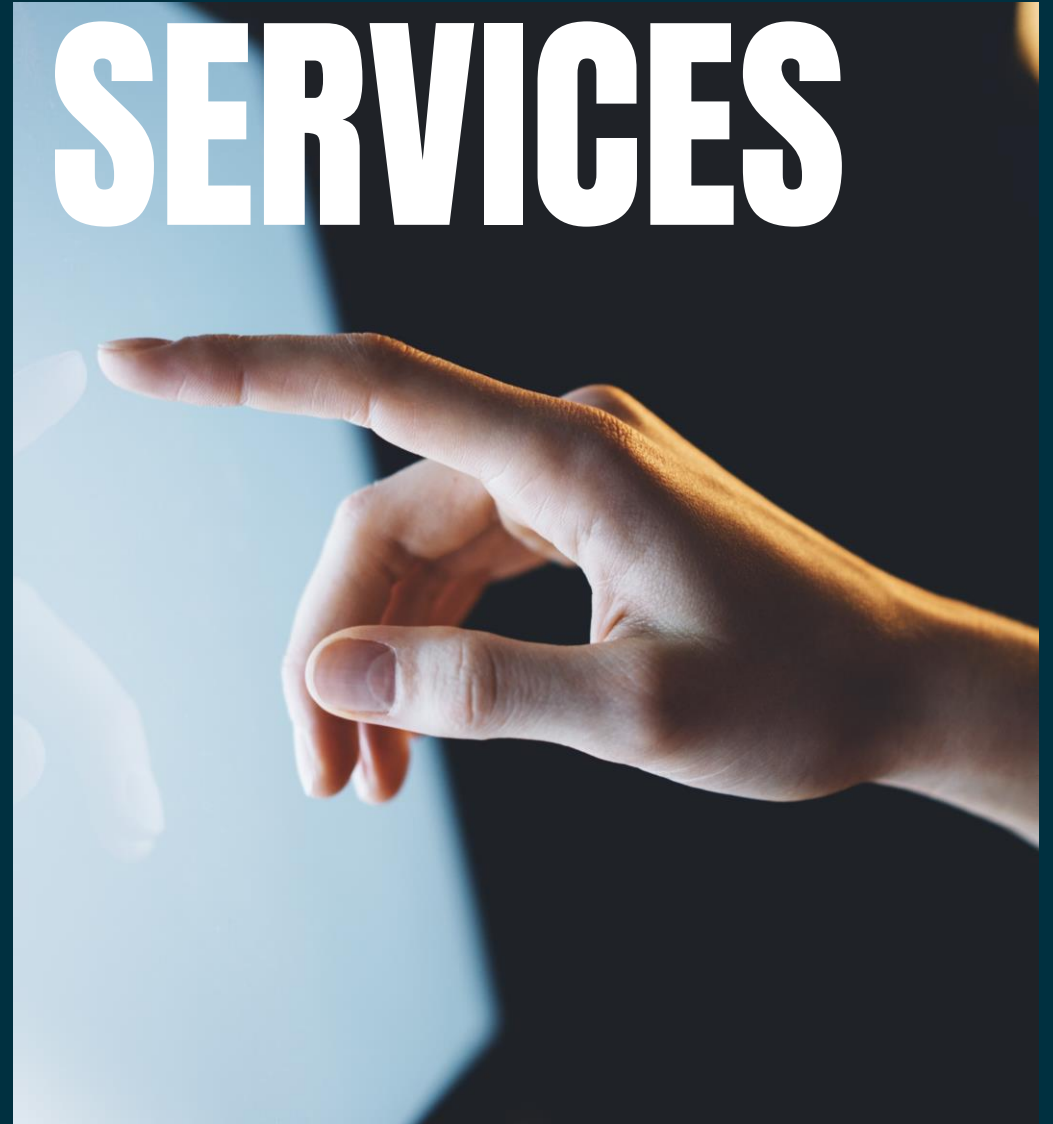
A photograph of the interior of the Business Services shop at Excel. The shop is well-lit with a grid of recessed ceiling lights. Shelves are stocked with various supplies, including tools, safety gear, and office supplies. A sign in the foreground reads "CAMERAS BATTERIES AND PHONE TOP UPS Sold Here". The shop is located on level 0 between Hall entrances N4/S4.

**Business Services**

# IN-HALL SERVICES

Need to order extra Internet bandwidth or cleaning services? Look out for our in-hall service desk, they can help you.

*Please note that payment is by card only.*



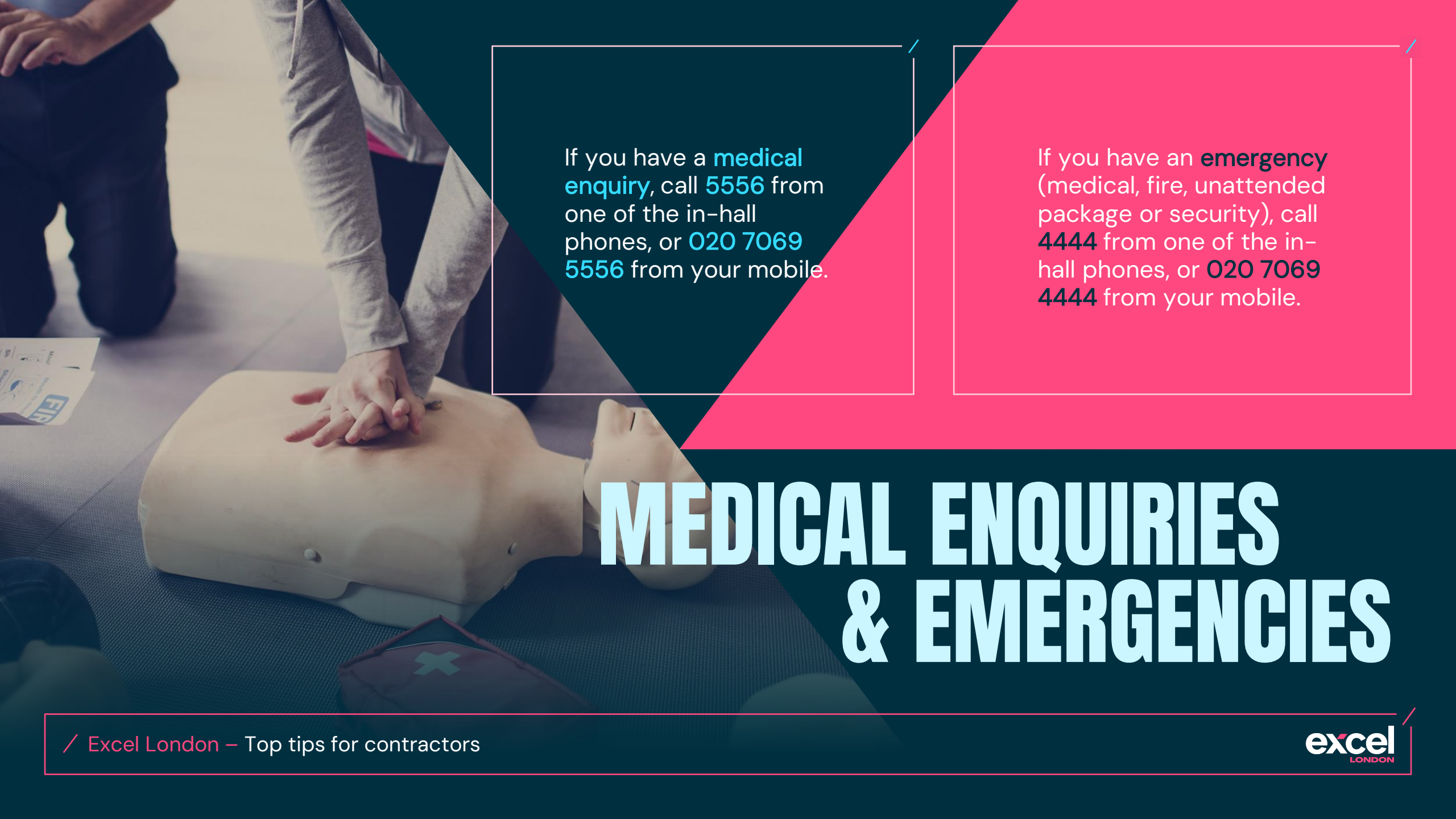
# HEALTH & SAFETY

Don't forget to wear steel cap boots and a hi-vis jacket. **These are the minimum requirements for accessing the event spaces during build and breakdown.** You can find out more information about health and safety requirements in venues.



## HEALTH & SAFETY REQUIREMENTS





If you have a **medical enquiry**, call **5556** from one of the in-hall phones, or **020 7069 5556** from your mobile.

If you have an **emergency** (medical, fire, unattended package or security), call **4444** from one of the in-hall phones, or **020 7069 4444** from your mobile.

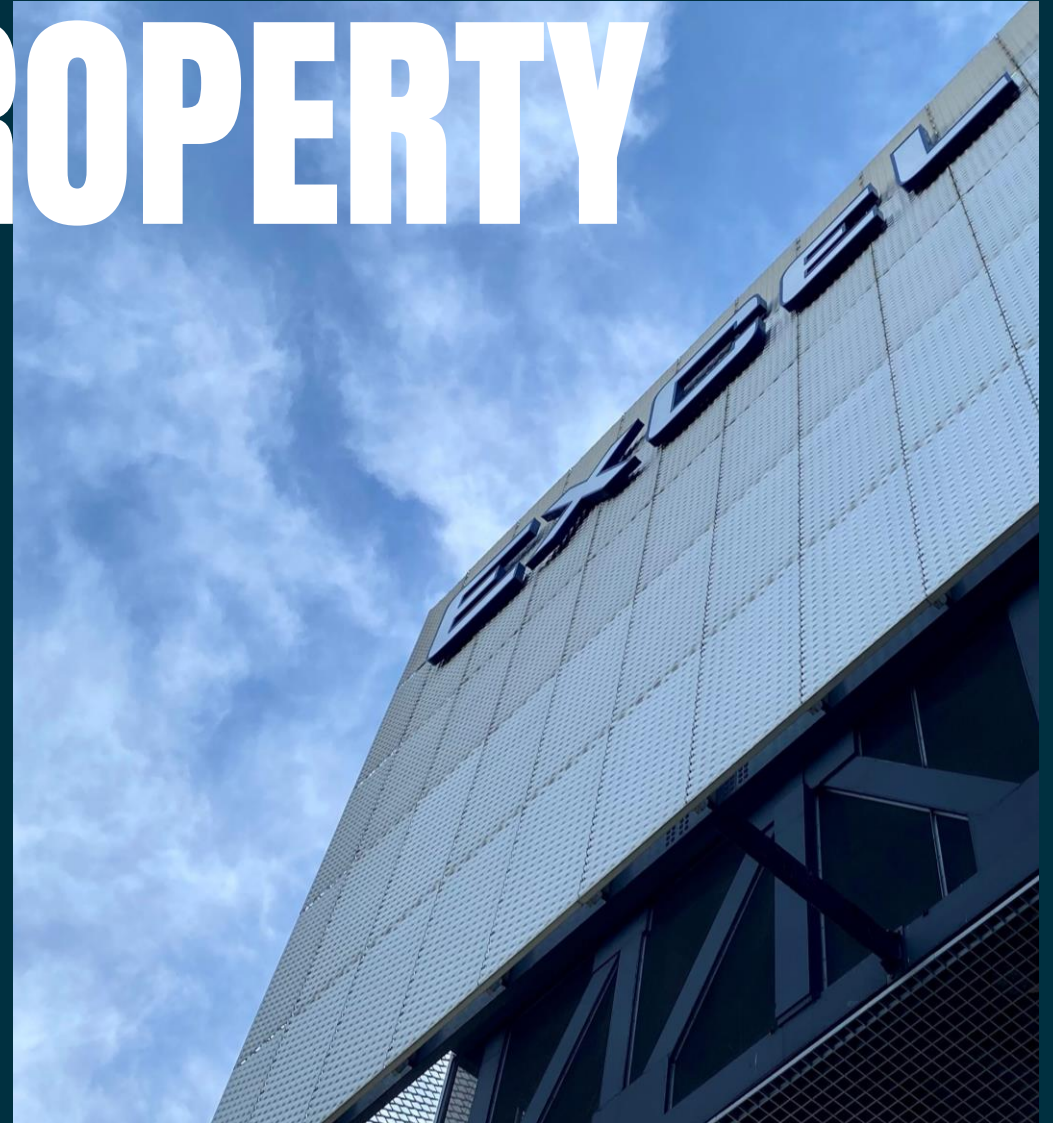
# MEDICAL ENQUIRIES & EMERGENCIES

# LOST PROPERTY

We work closely with our teams to reunite you with your lost items. If you think you've lost something at Excel London, please contact our team.



**EMAIL US**





**THANK  
YOU**