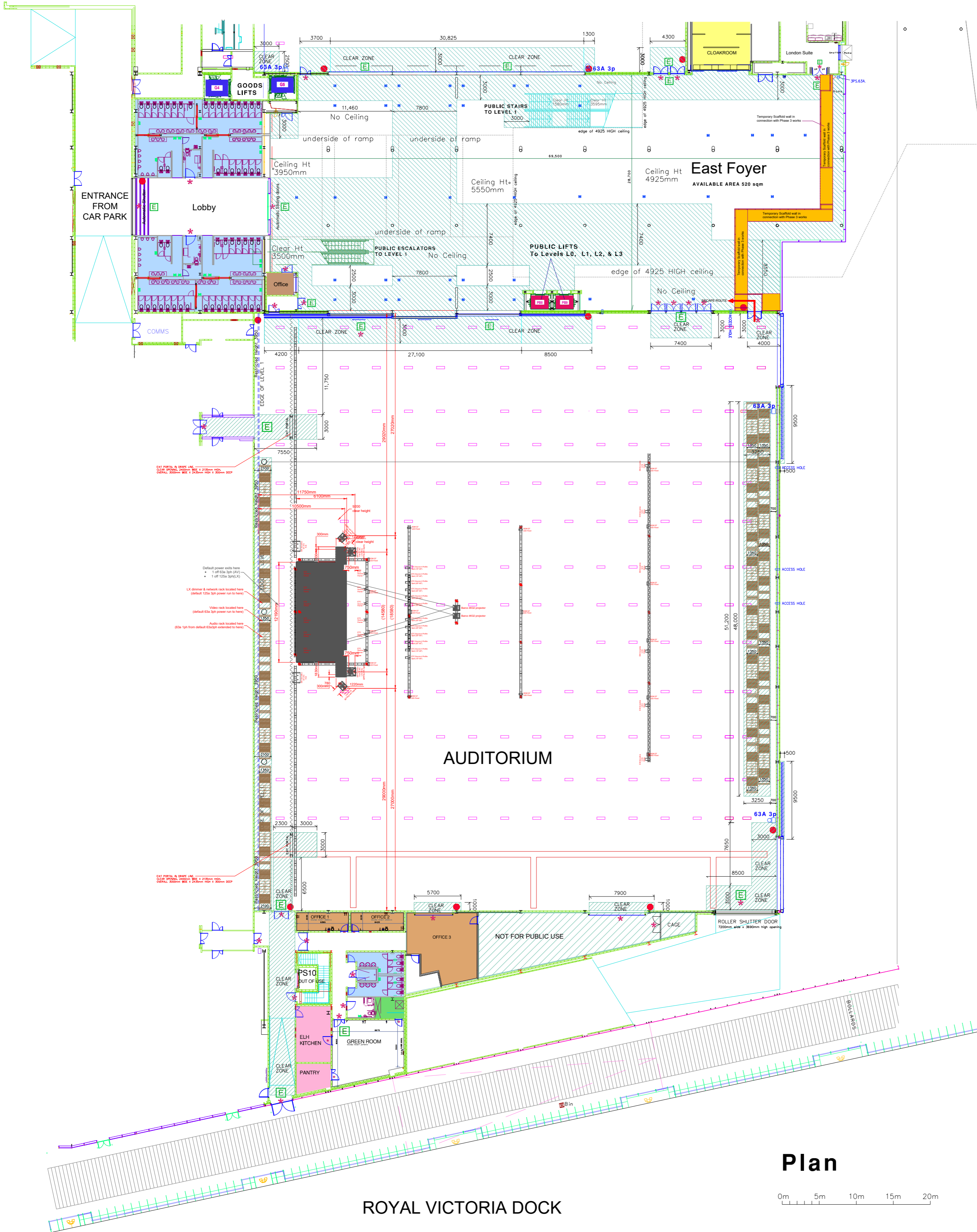
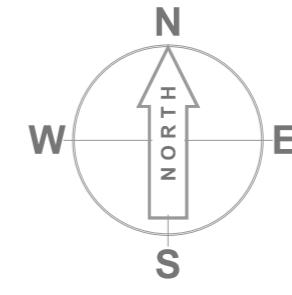
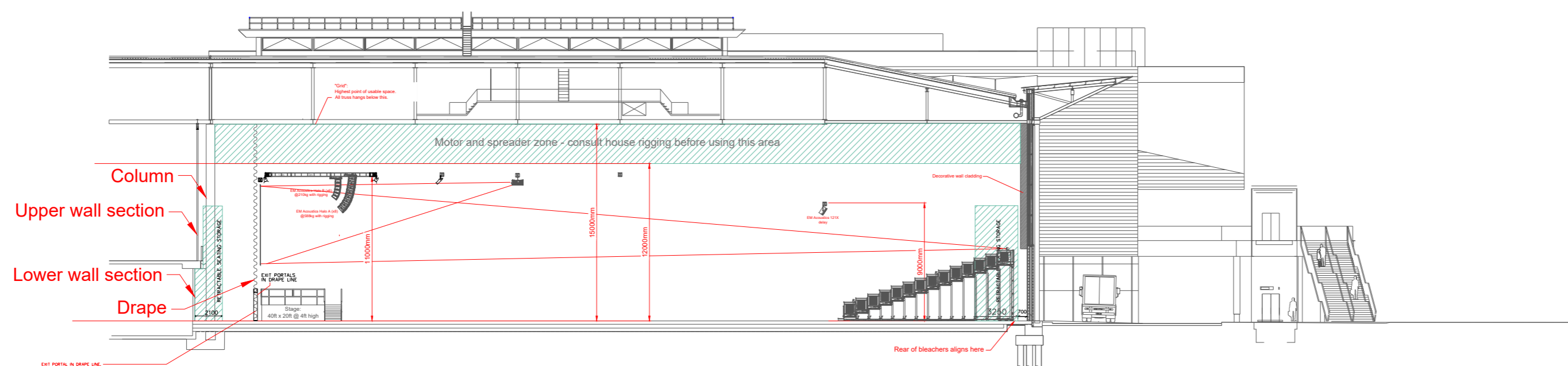


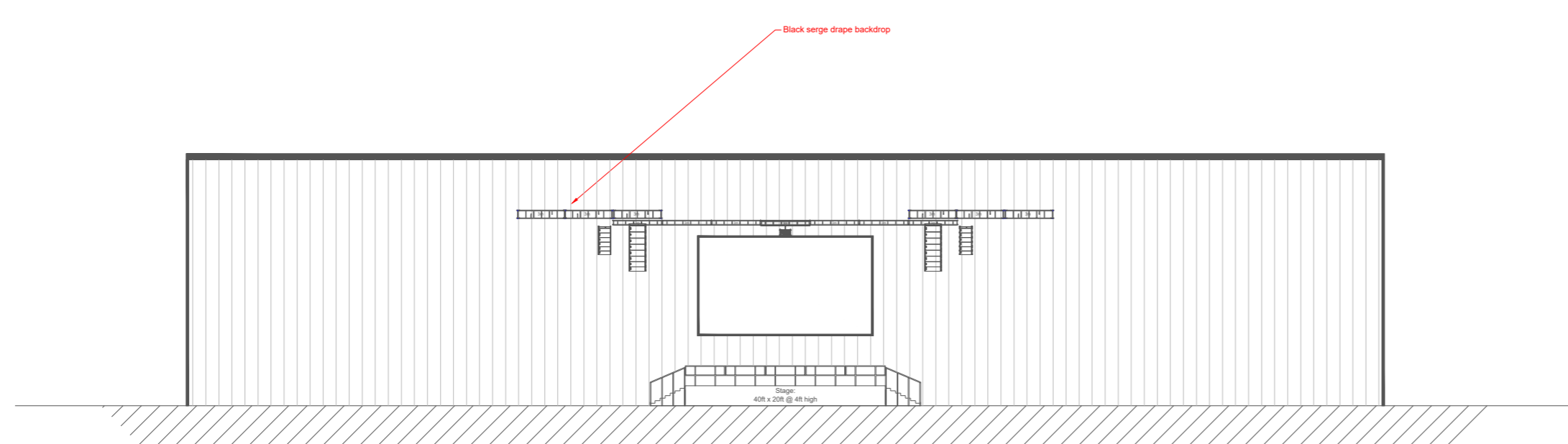
ICC AUDITORIUM WITH RIGGING



Plan



North - South Section



West Wall - Elevation

KEY:

E * DO NOT OBSTRUCT MARKED DOORS

TOILETS

ORGANISERS OFFICES

KITCHEN

CLOAKROOM

NOT FOR PUBLIC USE

LIFT PUBLIC LIFT

GOODS GOODS LIFT

LIFT DIMENSIONS G6

- Lift Size 1800w x 2700d x 2500h
- Door Size 1400w x 2400h
- 33 Pers or 2500 Kg

SHUTTER DIMENSION

- Door Size 1900 mm wide
- 2600 mm high

MOVABLE WALL PARTITIONS

PROJECTION MOUNTING POINT

Floor Power Locations

32A 1p 32A Single phase supply, available on request

63A 1p 63A Single phase supply, available on request

⊕ Floor grommets to access 32A & 63A power

⊠ Floor box location with:
4 x 13A power and
4 x data outlets
(London Suite)

Skirting trunking with power & data outlets

⊠ Floor box location with:
2 x 13A power and
2 x data outlets
(Foyer Areas)

SEE DRAWING FOR CEILING HEIGHTS IN VARIOUS LOCATIONS