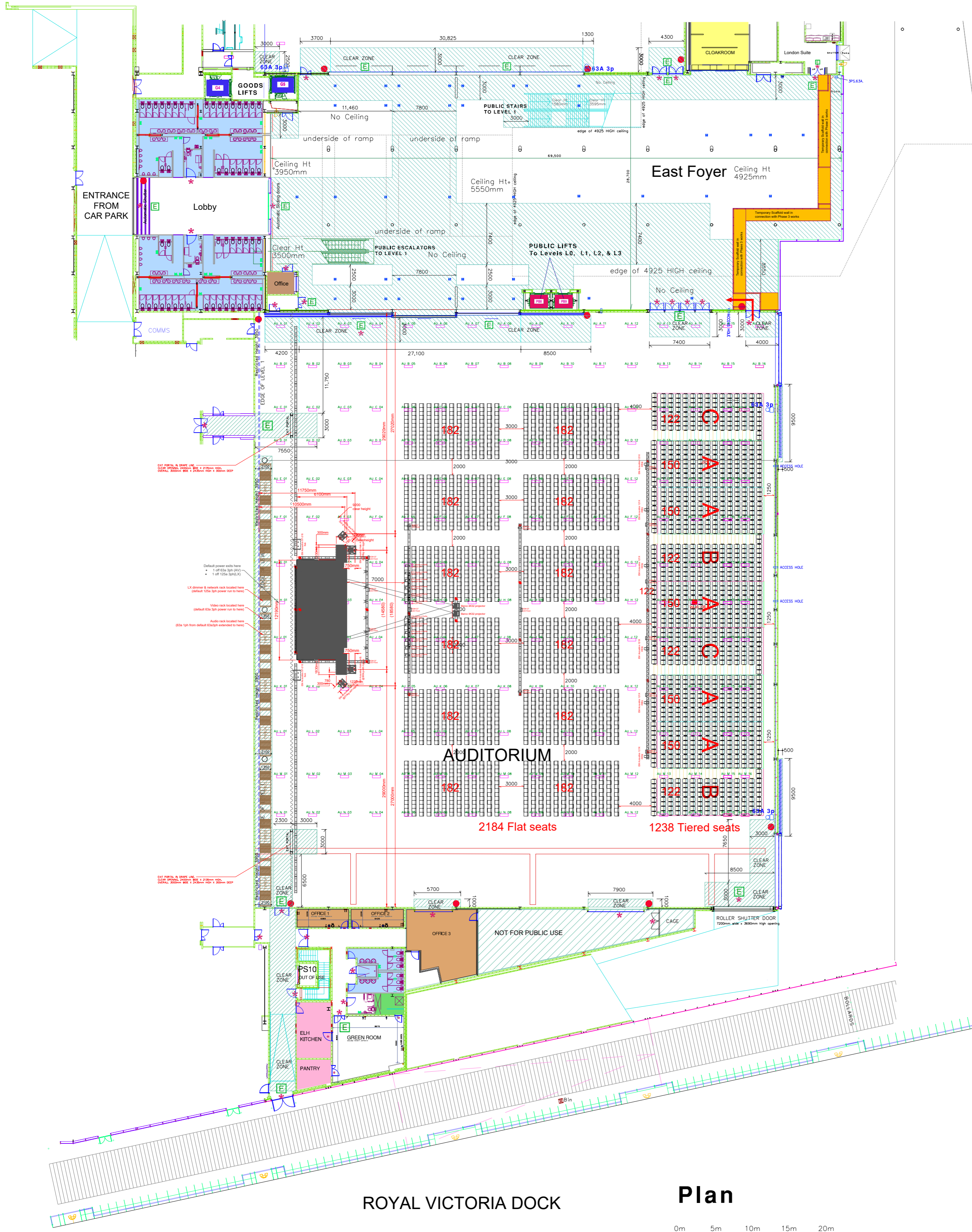
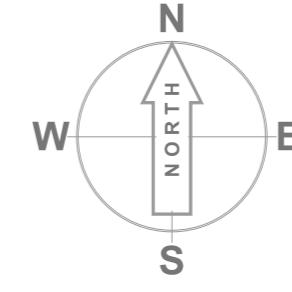


# ICC AUDITORIUM WITH RIGGING



**KEY:**

DO NOT OBSTRUCT MARKED DOORS

TOILETS

ORGANISERS OFFICES

KITCHEN

CLOAKROOM

EXCLUSION ZONE

NOT FOR PUBLIC USE

PUBLIC LIFT

GOODS LIFT

**LIFT DIMENSIONS G6**

- Lift Size 1800w x 2700d x 2500h
- Door Size 1400w x 2400h
- 33 Pers or 2500 Kg

**SHUTTER DIMENSION**

- Door Size 1900 mm wide
- 2600 mm high

MOVABLE WALL PARTITIONS

PROJECTION MOUNTING POINT

**Floor Power Locations**

32A Single phase supply, available on request

63A Single phase supply, available on request

Floor grommets to access 32A & 63A power

Floor box location with:  
4 x 13A power and  
4 x data outlets  
(London Suite)

Skirting trunking with power & data outlets

Floor box location with:  
2 x 13A power and  
2 x data outlets  
(Foyer Areas)

ROYAL VICTORIA DOCK

**Plan**

0m 5m 10m 15m 20m

**SEATING NUMBERS**

1238 Tiered Seats  
2184 Flat Seats  
42 Wheelchair users

**TOTAL 3464**

**Plan**

0m 5m 10m 15m 20m

**3464 pax Seating Layout**

**ICC Auditorium Level 0 22nd May 2024**