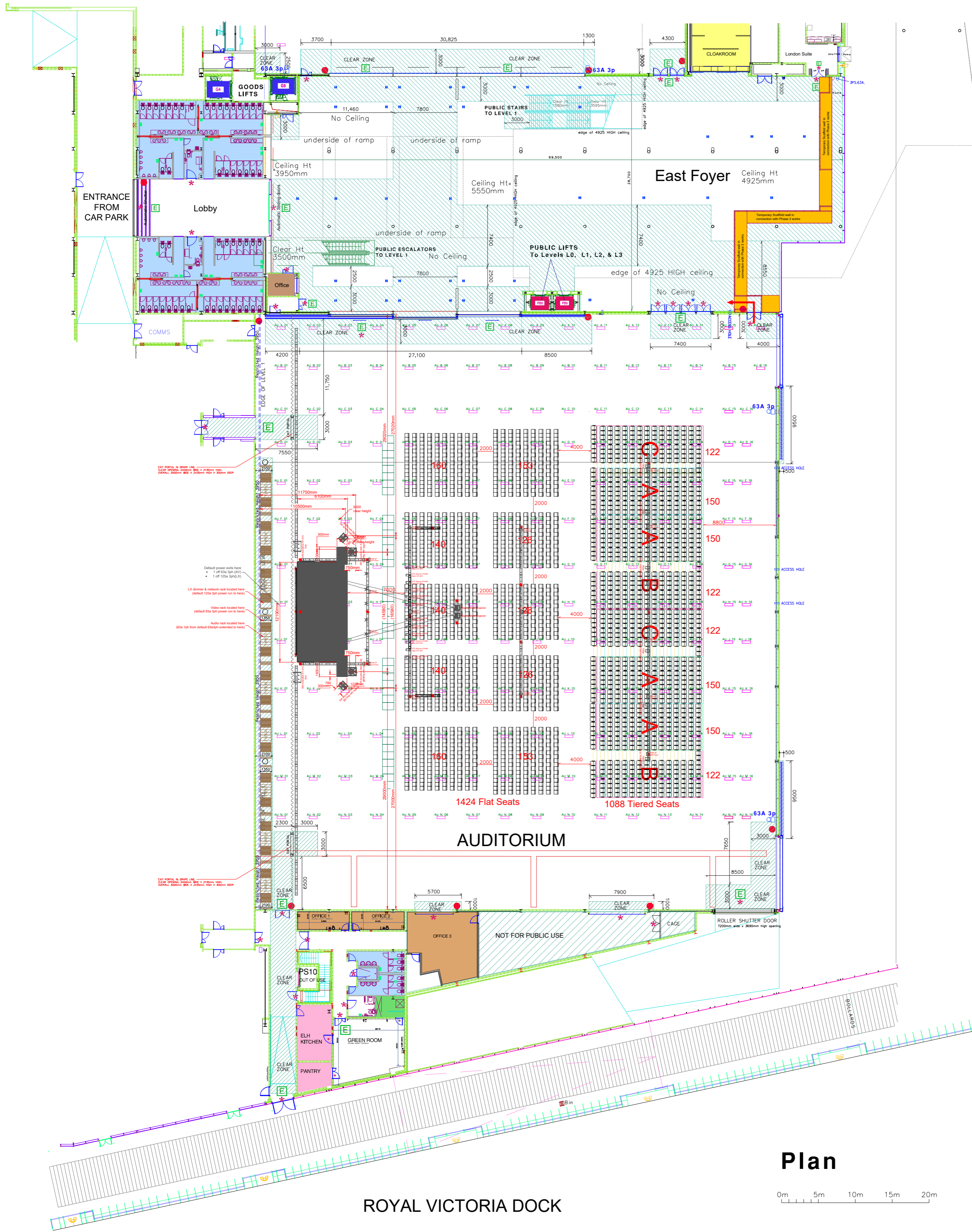
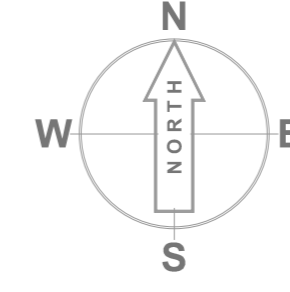


ICC AUDITORIUM WITH RIGGING



Plan

KEY:

E * DO NOT OBSTRUCT MARKED DOORS

TOILETS

ORGANISERS OFFICES

KITCHEN

CLOAKROOM

EXCLUSION ZONE

NOT FOR PUBLIC USE

LIFT PUBLIC LIFT

GOODS GOODS LIFT

LIFT DIMENSIONS G6

- Lift Size 1800w x 2700d x 2500h
- Door Size 1400w x 2400h
- 33 Pers or 2500 Kg

SHUTTER DIMENSION

- Door Size 1900 mm wide
- 2600 mm high

MOVABLE WALL PARTITIONS

PROJECTION MOUNTING POINT

Floor Power Locations

32A 1p 32A Single phase supply, available on request

63A 1p 63A Single phase supply, available on request

Floor grommets to access 32A & 63A power

Floor box location with:
4 x 13A power and
4 x data outlets
(London Suite)

Skirting trunking with power & data outlets

Floor box location with:
2 x 13A power and
2 x data outlets
(Foyer Areas)

ROYAL VICTORIA DOCK

SEATING NUMBERS

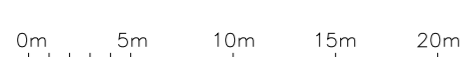
1088 Tiered Seats

1424 Flat Seats

37 Wheelchair users

TOTAL 2549

Plan



2549 pax Seating Layout

ICC Auditorium Level 0 22nd May 2024